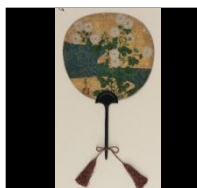




**CD:** The CD version of the slide set contains images formatted to approximately 1280 pixels wide at 96 DPI. These are meant to be projected for lectures; please do not reproduce them in any way. Each image will be named by the object number. A copy of this contact sheet and a Word document with label information will be included on the CD.



*Geese over a Beach*  
Maruyama Okyo  
1733-1795  
Four-panel folding  
screen; ink on paper  
**F1898.143**



*On one side Narihira  
and the pilgrim; on the  
other, chrysanthemums  
and a brook*  
Ogata Korin, Japanese,  
1658-1716  
**F1903.1**



*Birds and Flowers of the  
Four Seasons: Spring  
and Summer*  
Sesshu Toyo, 1420-1506  
Japanese, Muromachi  
period  
**F1953.94**



*Portrait of the  
poetess, Saigu no  
Nyogo Yoshiko*  
Japanese, Kamakura  
period, 13th century  
Purchase  
**F1950.24**



*Self-portrait*  
Kohno Michisei,  
Japanese, 1895 - 1950  
Kohno Michisei  
**S1998.115**



*One Hundred Old Men  
Gathering for a Drinking  
Party*  
Ike Taiga, 1723-1776  
Japanese, Edo period,  
18th century  
**F1960.22**



Dish  
Japanese, Edo period,  
ca. 1650  
Porcelain clay with  
cobalt under colorless  
glaze, enamels over  
glaze  
**F1967.15**



*Fugen*  
Takuma Eiga (fl. early  
14th century)  
Muromachi period,  
1333-1573  
Hanging scroll; ink and  
color on silk  
**F1904.202**



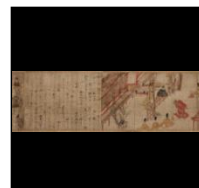
*Cranes*  
Ito Jakuchu, 1716-1800  
Japanese, Edo period,  
1775-1790  
Hanging scroll; ink on  
paper  
**F1997.25.2**



Mino ware tea bowl  
Japan, late 16th  
century  
Stoneware with iron  
pigment under Shino  
glaze; gold lacquer  
repairs  
**F1902.234**



Square dish with design  
after poems of birds and  
flowers  
Ogata Kenzan, 1663-1743  
**F1905.58**



*The Miraculous  
Interventions of Jizo  
Bosatsu*  
Japanese, Kamakura  
period, 13th century  
**F1907.375a**



*Waves at Matsushima*  
Tawaraya Sotatsu, fl.  
ca. 1600-1643  
Japanese, Edo period,  
17th century  
**F1906.231**



*Waves at Matsushima*  
Tawaraya Sotatsu, fl. ca.  
1600-1643  
Ink, color, gold, and  
silver on paper  
**F1906.232**



*Autumn at Asakusa (one  
of a pair with  
F1906.267)*  
Hishikawa Moronobu,  
1618-1694  
**F1906.266**



Screen (six panel)  
*Viewing Cherry  
blossoms at Ueno Park*  
Hishikawa Moronobu,  
1618-1694  
**F1906.267**



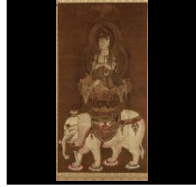
Screen (six panel)  
*Birds and Flowers of  
the Four Seasons:  
Autumn and Winter*  
Sesshu Toyo, 1420-  
1506  
**F1953.95**



Hanging scroll  
Kiyataka Hasha Sonja  
(J.) (Kanaka-vasta [S.]),  
disciple of the Buddha  
Arhat, from a set of  
sixteen  
**F1904.296**



Hanging scroll  
Kanzan  
Kao, fl. ca. 1300-1350  
Japanese, Muromachi period, 14th century  
**F1960.23**



Hanging scroll  
(mounted on panel)  
*The Bodhisattva Fugen* (Fugen Bosatsu)  
**F1963.6**



Hanging scroll  
*The Deity of Kasuga*  
Wakamiya Shrine  
Japanese, Muromachi period, 14th century  
**F1964.13**



Incense Box  
Japanese, Muromachi period, Red and black lacquer on carved wood  
**F1967.9a-d**



Buddhist Altar pendant (keman)  
Japanese, Kamakura period, 1185-1333  
Bronze with gold and silver  
**F1974.13**



Page from the Ishiyama-gire Poet: Ki no Tsurayuki  
Attributed to Fujiwara no Sadanobu, 1088-1156  
**F1969.4**



Screen (two-panel)  
*Thirty-Six Poets*  
Sakai Hoitsu, 1761-1828  
Hara Yoyusai, 1772 - 1845  
**F1970.22**



Handscroll  
*Imperial Anthology*, Kokinshū  
Hon'ami Koetsu, 1558-1637  
Tawaraya Sotatsu, fl. ca. 1600-1643  
**F1903.309**



Hanging scroll  
*Buddha Entering Nirvana*  
Japanese, Kamakura period, early 14th century  
**F1970.30**



Buddhist Sculpture  
*Amida (Amitabha)*  
Kamakura period, early 14th Century  
Wood with gold leaf  
**F2002.9a-f**



Buddhist Sculpture  
*Bodhisattva Kaikei*, active ca. 1185 - 1220  
**F1909.345**



Jar  
Shimizu Uichi, Japanese, 1926 - 2004  
Stoneware clay with iron glaze  
**S1989.8**



Hanging scroll  
*Thunder god*  
Katsushika Hokusai, Japanese, Ukiyoe school, 1760-1849  
**F1900.47**



Hanging scroll  
*Moonlight Revelry at Dozo Sagami*  
Kitagawa Utamaro, Japanese, 1754 - 1806  
**F1903.54**



Box  
Tebako (box for a woman's cosmetics and personal accessories)  
**F1907.106a-b**



Hanging scroll  
*Nyoirin Kannon*  
Japanese, Heian period, 12th century  
**F1961.6**



Jar  
Japanese, Kofun (Tumulus) period, ca. 550-600  
Stoneware clay with natural ash glaze  
**F1976.2a-c**



Handscroll  
Selected poems  
Emperor Fushimi, 1265-1317; reigned 1287-98  
**F1976.7**



Jar with burnished red slip  
Japanese, Yayoi period, 1st century  
Earthenware clay with burnished red slip  
**F1982.31a-c**



Woodblock print  
Woman applying makeup  
Hashiguchi Goyo, Japanese, 1880-1921  
Japanese, Taisho era, 1918  
Robert O. Muller Collection  
**S2003.8.120**



Woodblock print  
polyptych  
Picture of Western Traders at Yokohama Transporting Merchandise  
Hashimoto Sadahide, 1807 - 1873  
**S1998.55a-e**



Freshwater jar for the tea ceremony (mizusashi)  
Nonomura Ninsei (active ca. 1646-77)  
Japanese, Edo period, mid 17th century  
Stoneware clay with iron and rice-straw ash glazes; lacquered wooden lid  
**F1998.8a-i**