

Divine Felines: Cats of Ancient Egypt

Organized by the Brooklyn Museum

On view October 14, 2017–January 15, 2018, Freer|Sackler

Interviews:
Antonietta Catanzariti, Ancient Near East Fellow

Media only:
Erick Hoffman, hoffmane@si.edu, 202.633.0447
Megan Krefting, kreftingm@si.edu, 202.633.0271
Media website: asia.si.edu/press

Cats' personalities have made them Internet stars today. In ancient Egypt, cats were associated with divinities, as revealed in *Divine Felines: Cats of Ancient Egypt*. Representations of the lion-headed goddess Sakhmet and cat coffins are among the extraordinary objects that reveal felines' critical role in ancient Egyptian religious, social, and political life. Dating from the Middle Kingdom (2008–1630 BCE) to the Byzantine Period (395–642 CE), the eighty-one works include statues, amulets, and other luxury items decorated with feline features, which enjoyed special status among Egyptians. The exhibition, organized by the Brooklyn Museum, also dedicates a small section to cats' canine counterparts.

Please contact the Office of Marketing and Communications at 202.633.0271 or pressasia@si.edu for high-resolution images of exhibitions or events. Images are for media use only.



Cat's Head

30 B.C.E. to third century C.E.
Bronze, gold,
Brooklyn Museum
Charles Edwin Wilbour Fund, 36.114



Bust of the Goddess Sakhmet

Granodiorite
Brooklyn Museum. Gift of Dr. and Mrs. W. Benson Harer, Jr.
in honor of Richard Fazzini and the excavations of the
Temple of Mut in South Karnak, Mary Smith Dorward Fund
and Charles Edwin Wilbour Fund, 1991.311

Office of Public Affairs and Marketing
Freer Gallery of Art and Arthur M. Sackler Gallery



FREER | SACKLER
THE SMITHSONIAN'S MUSEUMS OF ASIAN ART



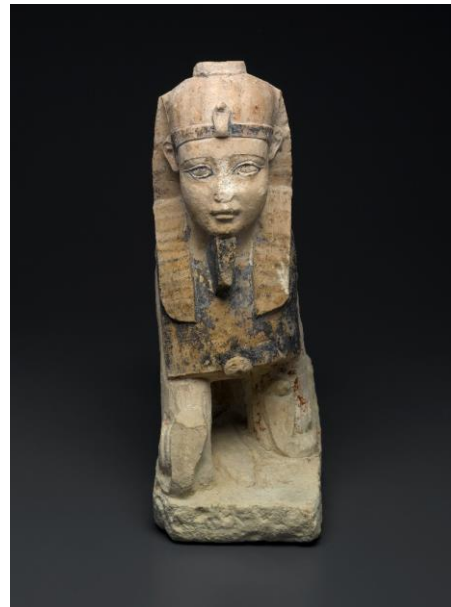
Seated Wadjet
664-332 B.C.E.
Bronze
Brooklyn Museum
Charles Edwin Wilbour Fund, 36.622



Figurine of a Standing Lion-Headed Goddess
664-30 B.C.E.
Faience
Brooklyn Museum
Charles Edwin Wilbour Fund, 37.943E



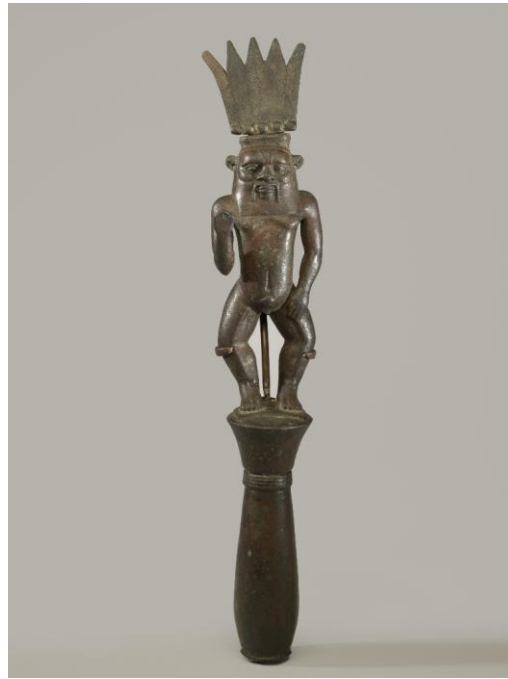
Cat with Kittens
ca. 664-30 B.C.E. or later
Bronze, wood
Brooklyn Museum
Charles Edwin Wilbour Fund, 37.406E



God Tutu as a Sphinx
1st century C.E. or later
Limestone, painted
Brooklyn Museum
Charles Edwin Wilbour Fund, 37.1509E



Weight in Form of a Cat
305-30 B.C.E.
Bronze, silver, lead
Brooklyn Museum
Charles Edwin Wilbour Fund, 37.424E



Finial with Figure of the God Bes
ca. 1075-656 B.C.E.
Bronze
Brooklyn Museum
Charles Edwin Wilbour Fund, 46.127



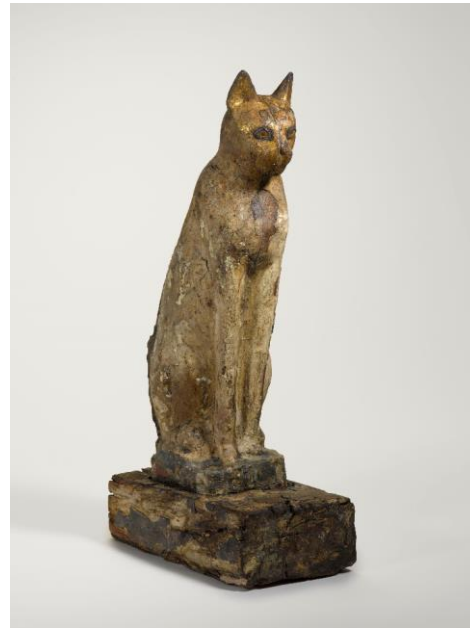
Cat Mummy
Catalog number A381570
Department of Anthropology, Smithsonian Institution
Photo by Donald E. Hurlbert



Stela with the Gods Bes and Tutu
332-30 B.C.E.
Limestone
Brooklyn Museum.
Charles Edwin Wilbour Fund, 58.98



Striding Sphinx
945-712 B.C.E.
Bronze
Brooklyn Museum
Charles Edwin Wilbour Fund, 61.20



Coffin for a Cat
664-332 B.C.E., or later
Wood, gesso, paint, animal remains
Brooklyn Museum
Charles Edwin Wilbour Fund, 37.1944Ea-b



Sculptor's Model of a Walking Lion
ca. 664-30 B.C.E.
Limestone
Brooklyn Museum
Charles Edwin Wilbour Fund, 33.190



Sphinx of King Sheshonq
ca. 945-718 B.C.E.
Bronze
Brooklyn Museum
Charles Edwin Wilbour Fund, 33.586



Funerary Stela of C. Julius Valerius
3rd century C.E..
Limestone, traces of paint
Brooklyn Museum
Gift of Evangeline Wilbour Blashfield, Theodora Wilbour, and Victor Wilbour honoring the wishes of t, 16.105



Spoon with Jackal Handle
ca. 1539-1292 B.C.E.
Wood
Brooklyn Museum
Charles Edwin Wilbour Fund, 37.623E